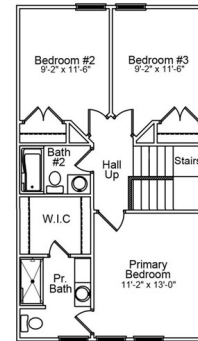
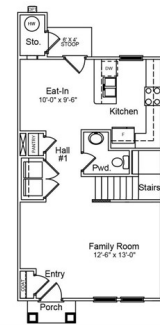




**\$ 209,900**



**1150 Ederbach Dr, Lexington, SC 29073**

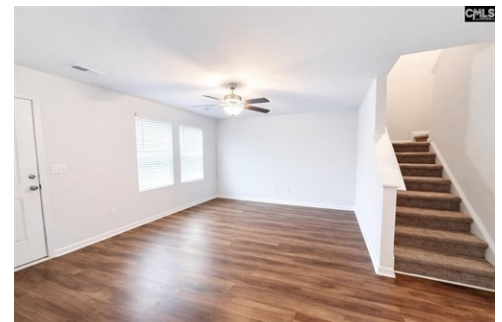
- » Beds: 3 | Baths: 2 Full, 1 Half
- » MLS #: 626527
- » Townhouse | 1,360 ft<sup>2</sup> | Lot: 2,178 ft<sup>2</sup>
- » More Info: [1150EderbachDr.IsForSale.com](https://www.1150EderbachDr.IsForSale.com)



Tricia Kim  
 Laura Hooper  
 (803) 699-7000 (Office)  
 (803) 960-1615 (Tricia Kim, Realtor)  
 (803) 446-3140 (Laura Hooper, Realtor)  
[tricia@fowlerteamsc.com](mailto:tricia@fowlerteamsc.com)

**kw PALMETTO**  
 KELLERWILLIAMS, REALTY

Keller Williams Palmetto  
 1523 Huger Street  
 Suite B  
 Columbia, SC 29201  
 (803) 722-1900



Move-in ready townhome living with unbeatable convenience in Jessamine Place! Ideally located in the Lexington/West Columbia area, this home provides quick access to I-20, I-26, Highway 378, Lexington Medical Center, shopping, dining, and everyday conveniences, with an easy commute to downtown Columbia, the University of South Carolina, and convenient routes toward Charleston. Enjoy low-maintenance living in a community known for its charming lots and prime location. This two-story townhome features three bedrooms and 2.5 bathrooms with a layout designed for both comfort and functionality. The main level welcomes you with a covered front porch and entry, opening into a spacious family room ideal for relaxing or entertaining. The space flows seamlessly into the eat-in kitchen, which includes ample counter space, cabinetry, and a pantry for everyday storage needs. A convenient half bath and additional storage complete the main level, creating a practical and efficient living space. Upstairs, the primary suite serves as a private retreat with a well-appointed en-suite bathroom featuring a comfort-height vanity with dual sinks and a spacious 5-foot walk-in shower, along with a walk-in closet. Two additional bedrooms share a full bathroom, providing flexibility for guests, a home office, or hobbies. The upstairs layout allows for separation between living and sleeping areas, enhancing privacy and livability. Two

